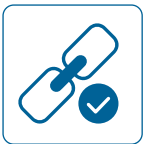




# UNITY MODEL-C

Container Energy Storage System

## KEY FEATURES



### LIQUID COOLING

Smart liquid system extends battery life and performance.



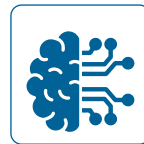
### RELIABILITY

Integrated BMS, fire safety and real-time monitoring.



### EFFICIENCY

High round-trip efficiency for maximum energy utilization.



### INTELLIGENCE

Cloud-based EMS ensures efficient energy management.



### SCALABILITY

Modular design expandable up to 6 MWh.



### MONITORING

Real-time data tracking and predictive maintenance support.



1800 2026 252

## TECHNICAL PARAMETERS

MODEL C	Model C-5.00 MWh	Model C-6.25 MWh
<b>Battery Parameters</b>		
Nominal Capacity (kWh)	5015.96 kWh	6251.3 kWh
Nominal Voltage (V)	1331.2V	1331.2V
Voltage Range	1164.8~1497.6 V	1123.2~1497.6 V
Cell Type	LFP 3.2V/ 314 Ah	LFP 3.2V/ 587 Ah
Cluster Configuration	1P 416S*12	1P 416S*8
Nominal Power	2507.9 kW@0.5CP ; 1253.8 kW @0.25CP	3125.6 kW @0.5CP ; 1562.8 kW @0.25CP
<b>System Parameters</b>		
Auxiliary Power Supply	400V AC, 50/60 Hz	400V AC, 50/60 Hz
Operation Ambient Temp	-30°C to 50°C	-30°C to 55°C
Altitude	≤3000m	≤3000m
SOC Calculation Accuracy	≤3% (after balancing)	≤3% (afterbalancing)
Relative Humidity	≤100% RH (non condensing)	≤100% RH (non condensing)
Altitude	≤3000m	≤3000m
<b>General Paramaters</b>		
IP Rating	Container: IP55 Module: IP67	Container: IP55 Module: IP67
Cooling Mode	Liquid Cooling	Liquid Cooling
Noise	≤75dB (A), Standard Version ; ≤65db (A), Silencer Assembly (Optional)	
Weight	42T	49T
Corrosion Proof Grade	C4	C4
Fire Suppression System	Smoke and heat detectors, FACP, ventilation system, dry pipes with sprinklers, aerosol	
Communication Port	Support CAN/ Modbus 485/ TCP communication Methods ; CAN communication is recommended	
Dimensions	6058 x 2436 x 2896 mm	6058 x 2436 x 2896 mm
<b>Certification</b>		
Battery Cell	IEC62619, UL1973, UL9540A	IEC62619, UL1973, UL9540A
Battery Pack	IEC60730-1, UN38.3 UL1973 UL9540A U 60730-1	IEC60730-1, UN38.3 UL1973 UL9540A UL 60730-1
Battery Rack	IEC62619, IEC 60730-1, IEC 63056, IEC62477-1 UL1973, UL 9540A, UL 60730-1	IEC62619, IEC 60730-1, IEC 63056, IEC62477-1 UL1973, UL 9540A, UL 60730-1
System	IEC 62477-1, IEC 60730-1 EN IEC 61000-6-2/4, UN38.3 UN3536 UL9540 UL 60730-1	IEC 62477-1, IEC 60730-1 EN IEC 61000-6-2/4, UN38.3 UN3536, UL9540, UL 60730-1